

McMILLAN PUBLIC ART

The public art program will distinguish McMillan as a unique destination, while referencing the important history of the site and reflecting the character of the surrounding community. Building public art into the redevelopment plan demonstrates Vision McMillan’s commitment to the community, as well as to the importance of creative place-making. McMillan’s public art program will strategically incorporate art installations that enhance the site’s community assets to be enjoyed by the public.

Public art will be incorporated into the overall lighting and landscape plan, with consideration for the site’s historical features and highlighting the importance of water, movement, recycled materials and scale. The public art plan will allow the historic architectural features and the natural landscape with its tree-lined perimeter to shine. Character-defining elements will serve as themes for the public artworks. Similarly, certain existing elements such as the sand storage bins and regulator house will be developed with a public art objective.

The site’s unique, historic character offers inspiration for public art themes including repetition and grids, the simple geometry of the cylindrical sand storage bins, cubic brick regulator houses and pyramidal concrete washers. These key concepts will inform the selection and development process for public art on the site. Similarly, the public art team will consider potential synergies with the external viewpoints that connect neighborhood landmarks and points of city pride (i.e. Washington Monument; Basilica; Howard University’s Clock Tower).

In addition, the site’s functional elements such as manhole covers, benches, pavers, and playground equipment, provide opportunities to include artists in the design, and in some cases, the fabrication of these objects. The public art program will be closely coordinated with the project’s design team to insure a cohesive approach that compliments the site’s architecture and landscape.

Public art will be integrated into the site in thoughtful, innovative ways that define space, create a holistic art environment and make a strong aesthetic statement. The public art program will also draw attention to overlooked spaces, integrate artwork into the natural and built environment and evoke movement, whimsy, and character.



GOALS

Create a holistic, integrated art environment that makes a strong aesthetic statement

Activate space and functionality

Use public art to create an experience that references the historical significance of McMillan through content and/or materials

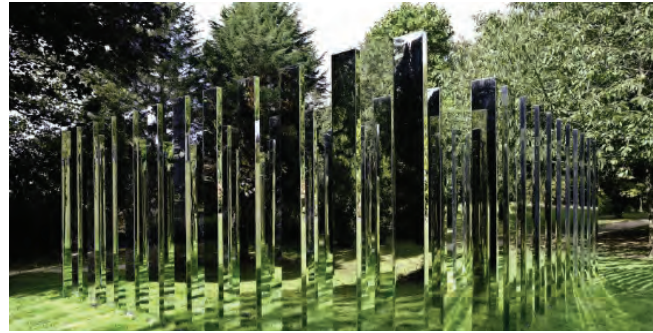
Highlight locations in innovative or unconventional ways

Enliven gathering locations where people could gravitate to and explore

Consider potential synergies with the external viewpoints that connect to neighborhood landmarks and points of city pride (i.e. Washington Monument; Basilica; Howard University's Clock Tower)

Design artworks to be distinctive yet complimentary to both the historical assets and the new developments at McMillan

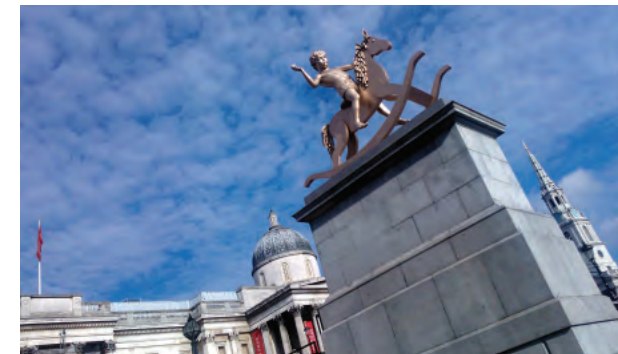
Consider key material features such as filter bed sand, iron in reference to the ironwork on portals and on manhole covers and other materials used throughout site: concrete, brick, clay, tile, wood and metal



Defining Place: Creating artist-designed gathering places



Reusing & Recycling Materials: Artists using historic and functional references by reusing materials



Dynamic Platforms for Contemporary Art: Creating spaces for rotating art installations



Integrated Streetscape Design: Functional design elements envisioned by artists

Discovering art in unexpected places...



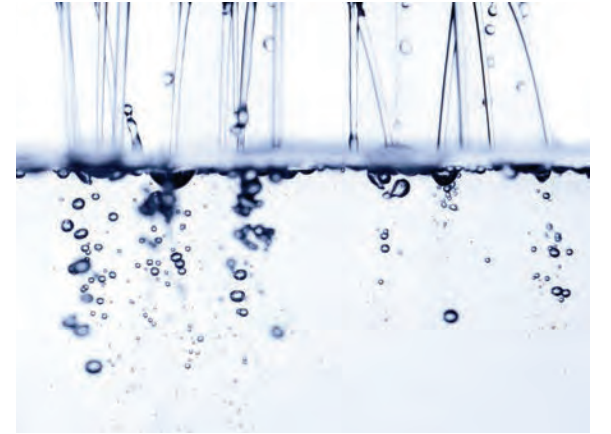
...incorporating historic elements...



...drawing attention to overlooked spaces

KEY ELEMENTS

water



sand



earth



concrete

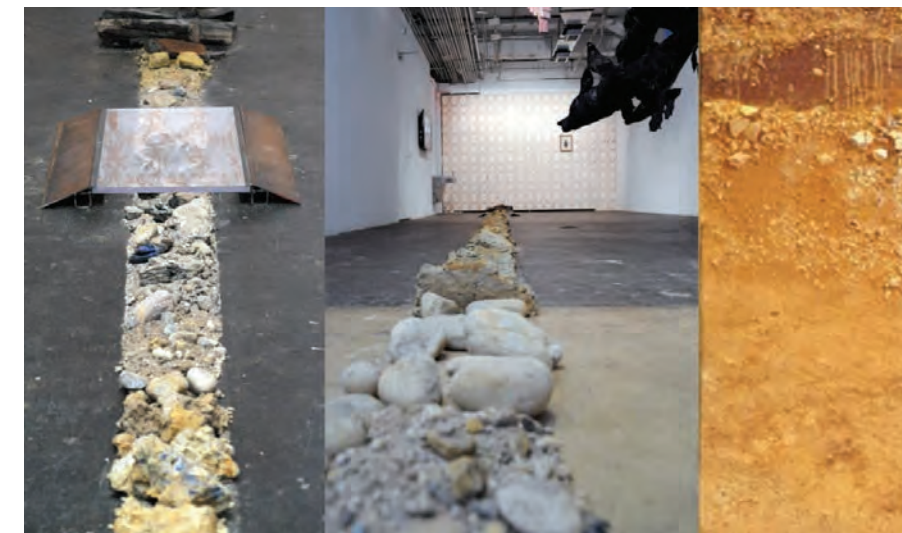


OPPORTUNITIES FOR ARTISTIC INTERVENTION



- A. MAIN GATEWAY
- B. GATEWAY 2
- C. GATEWAY 3 (STAIRS)
- D. GATEWAY 4
- E. COMMUNITY CENTER
- F. REGULATOR HOUSE
- G. MANHOLE COVERS (CELL 14)
- H. SAND STORAGE BINS/SILOS
- I. STATIONARY SAND WASHER
- J. PAVERS
- K. BENCHES/SEATING
- L. PLINTH AND/OR SCULPTURAL WORKS
- M. WATER INTEGRATED WORK INTO DRAIN/ BASIN INFRASTRUCTURE
- N. HEALING GARDENS
- O. OLMSTED UNDERPASS AND PEDESTRIAN AREA

NOTE: LOCATION OF ARTIST DESIGNED APVERS (J) AND BENCHES/ SEATING (K) PENDING FURTHER LANDSCAPE INPUT



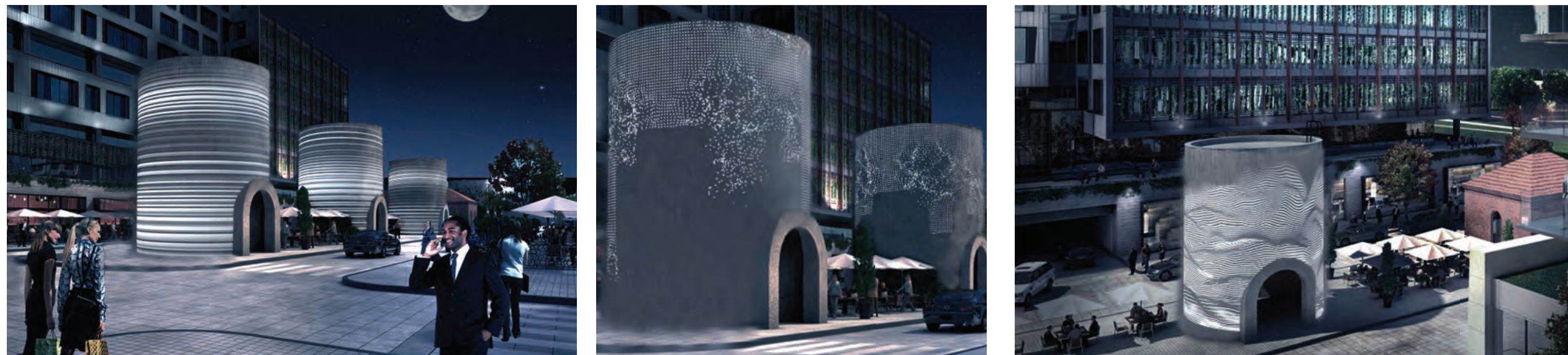
Integrate artist-designed natural elements into main entrance to highlight 'sectional' theme of site

Adaptive re-use of regulator houses as food & art projects



Artist-designed manhole covers: potential for collaboration with DC public schools and local artists, honoring of local art movements such as the DC Color School and light integration

The Sand Filtration Silos will be highlighted by light, projections, murals, and other creative elements



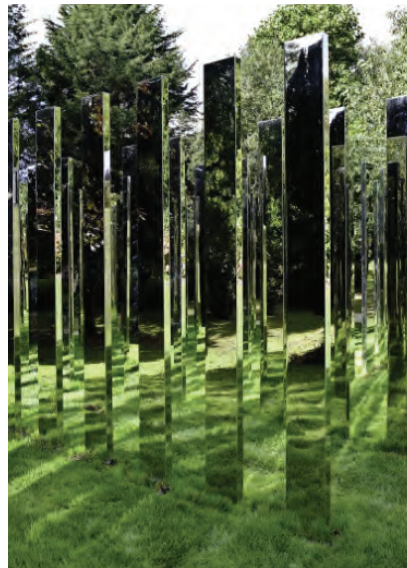
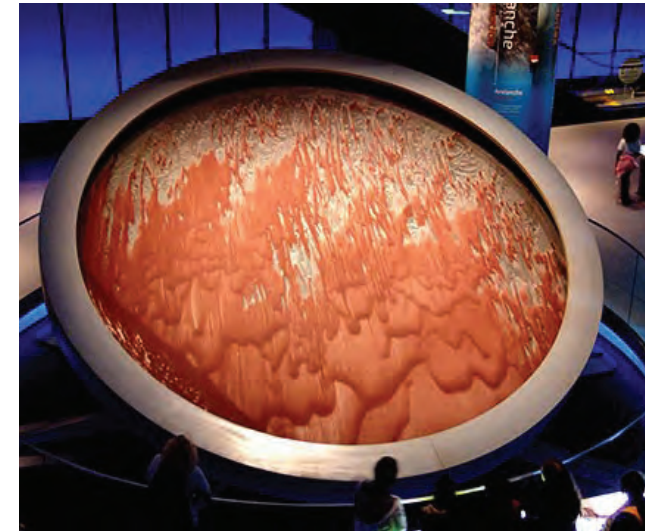
Themes of health and water are critical to the historical and present-day identity of McMillan. Projections can create dynamic murals of light that reinterpret these themes to extract a more modern and holistic understanding of the site and place

Community Center and Olmsted Underpass activation can be achieved through sculpture, technology, lighting, and interactive themes



Streetscape elements can include artist-designed pavers, playground equipment, and benches

Healing Garden activation can be achieved through integrated works



Recycled materials on site can be reinterpreted into sculptures
Kinetic sculptures can be employed to create dynamic experiences